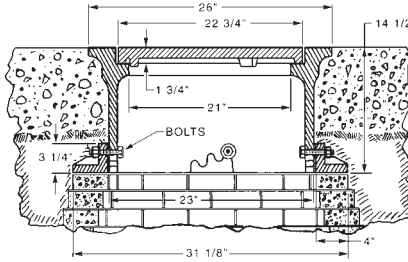


R-1672
**Manhole Frame,
Flange, Solid Lid**

Heavy Duty

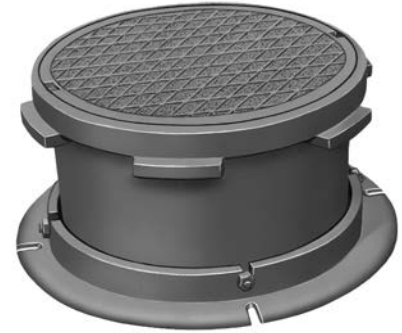
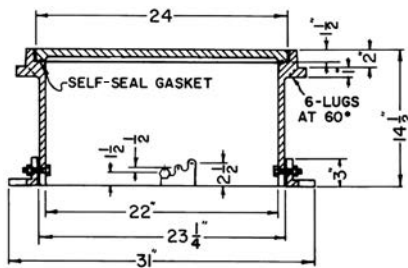
Manhole cover as shown in concrete pavement. Top flange lies flush with grade and prevents frame from settling below that level. Sleeve-ring construction allows frame to extend below slab, telescoping into base flange. Frame and pavement are not supported by manhole wall and are free to move together.



R-1673-A
**Floating Manhole,
Self-Sealing Lid**

Heavy Duty

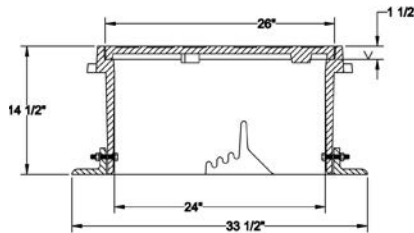
Specify if self-seal not required.
Bolted lid available, please specify.
Furnished with four 3/4" x 2" anchor slots on 28" diameter bolt circle.



R-1673-B
**Floating Manhole,
Solid Lid**

Heavy Duty

Lid bolted to frame is an option.



R-1673-C
Floating Manhole, Vented Lid

Heavy Duty

